



Pressure Regulator Series N

Ports 1/8", 1/4" NPTF
Nipple type

The Series N pressure regulator is available with 1/4" and 1/8" NPTF ports.

Its design incorporates a self relieving diaphragm so as to allow incremental adjustments.

This compact regulator may be mounted directly on pipes or onto a console.



TECHNICAL SPECIFICATIONS

Construction	Diaphragm type - nipple type
Materials	Nickel-Plated brass, brass body, Buna-N seals, Nylon knob, internals in brass
Threaded ports	1/8", 1/4" NPTF
Weight	Kg 0.316 = .7 lbs
Pressure gauge port	1/8" NPTF
Type of mounting	In-line or console (in any position)
Operating temperature	-5° C - 50° C, (23° F - 122° F), with Dew Point of air at least 2° C (4° F) below the min working temperature

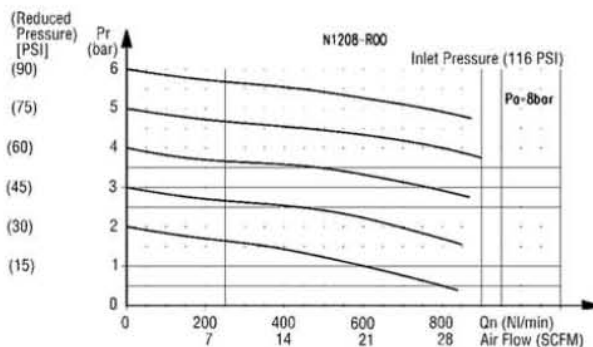
PNEUMATIC DATA

Inlet pressure	0 — 16 bar (0 — 232 psi)
Outlet pressure	0.5 — 10 bar (7.25 — 145 psi), Optional outlet ranges offered
Nominal flow	See graph
Secondary pressure relieving	Standard

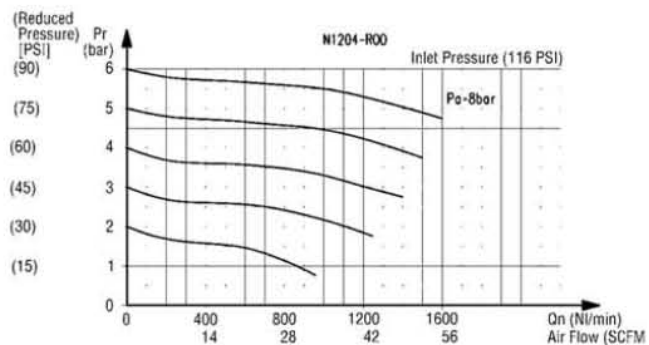

CODING EXAMPLE

N	2	04	-	R	0	0	TF
---	---	----	---	---	---	---	----

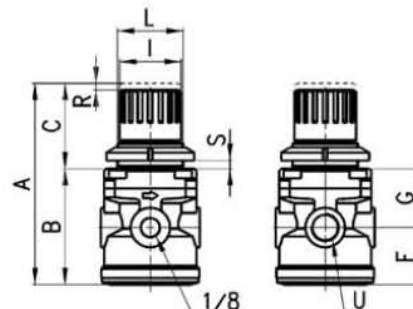
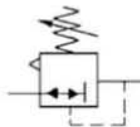
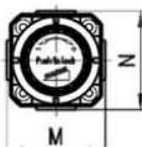
N	SERIES
2	SIZE 1 = small bowl 2 = normal bowl
04	PORTS: 08 = 1/8" 04 = 1/4"
R	REGULATOR
0	OPERATING PRESSURE 0 = 0.5 — 10 bar (7.25 - 145 psi) 1 = 0 — 4 bar (0 - 58 psi) 2 = 0 — 2 bar (0 - 29 psi) 7 = 0.5 — 7 bar (7.25 - 103 psi)
0	DESIGN TYPE 0 = self-relieving diaphragm 1 = non-relieving, diaphragm
TF	PORT TF = NPTF Blank = BSPP thread ports

FLOW DIAGRAMS
N1208-R00TF, 1/8" Model


Pa = Inlet pressure
Pr = Regulated pressure
Qn = Flow

N1204-R00TF, 1/4" Model


Pa = Inlet pressure
Pr = Regulated pressure
Qn = Flow

Pressure regulator, Series N

DIMENSIONS (in inches)

Mod.	A	B	C	F	G	I	L	M	N	R	S	U
N1208-R00TF	3.622	2.086	1.535	1.023	1.063	1.102	M30x1.5	1.772	1.772	.118	0 - .236	1/8" NPTF
N1204-R00TF	3.622	2.086	1.535	1.023	1.063	1.102	M30x1.5	1.772	1.772	.118	0 - .236	1/4" NPTF